

**FAST, SECURE,  
CONNECTS IN  
SECONDS**

**NEW**

**uponor**

# **Q&E shrink-Fit™**

PLUMBING SYSTEM



**Simple, Secure & Complete.  
Adaptable, High Flowing & Hardwearing.**

For more information visit: **[www.uponor-qe.com](http://www.uponor-qe.com)**

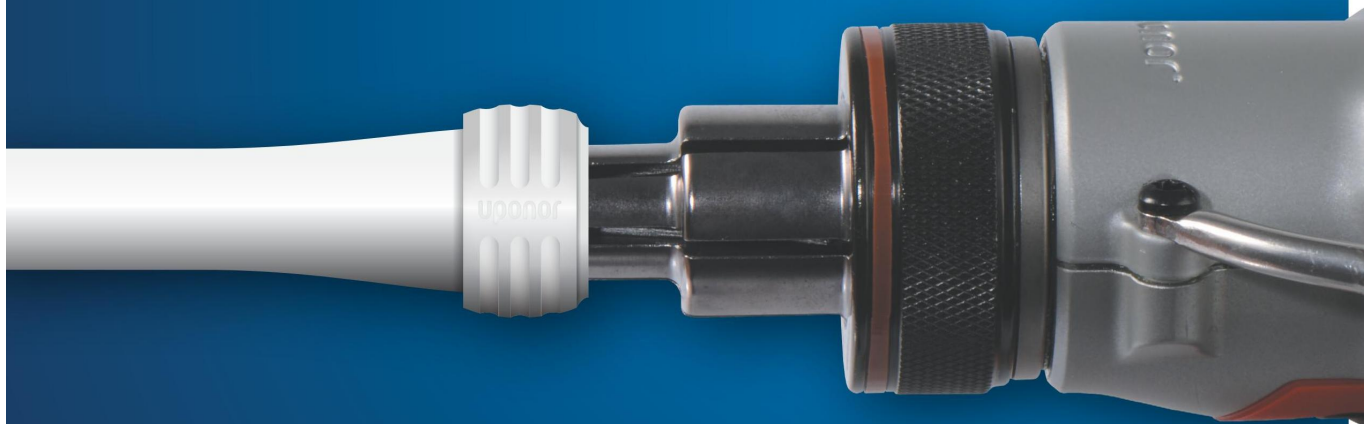
# Q&E Shrink-Fit™

## Faster, More Secure & Right First Time.

That's why it's the number one system in Europe and the USA. Our advanced and unique **Q&E Shrink-Fit™** system means you can make long-term, water-tight joints in seconds; joints that will withstand the most demanding conditions.

## Fast & Simple to Install

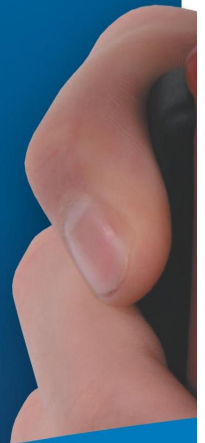
With the Milwaukee expander you'll be making the most reliable connections faster than ever before. It couldn't be easier: pipes are lightweight and flexible; joints are easy to make with a simple three-step process.



## More Watertight & Durable

Our system is unique. It's the only Shrink-Fit™ jointing system and it guarantees a reliable, watertight connection.

Using the Milwaukee Expander, the Q&E Shrink-Fit™ pipe is stretched to accommodate its fitting. The thermal memory of the material naturally shrinks back into its original state creating the secure fit. It just can't help itself.



## Superior Water Flow

Water flow is improved with Q&E Shrink-Fit™ and the likelihood of pressure loss reduced thanks to the design of manifolds and couplings.

Add that to guaranteed secure connections and call-backs are reduced significantly, saving you precious time.

**WRAS**  
APPROVED  
PRODUCT

## Universal & Comprehensive

The Q&E Shrink-Fit™ system has been designed as a complete system with high productivity and fit-for-purpose in mind.

High impact pipes are easy to handle and flex; they're corrosion-free and chemical resistant.

Our full range of fittings, adaptors, rings, manifolds and modular accessories mean it can work alongside any conventional system, regardless of pipe size, or be installed as a total pumping solution.

*3,000 million metres of Q&E Shrink-Fit™ has been installed around the world. With over 300 million fittings!*



3 Steps to Secure and Watertight



# FAST AND SECURE JOINTS FOR LESS



**FREE** MILWAUKEE EXPANDER **worth £479**

When you spend £500 or more on Uponor PEX pipe and fittings.  
Visit [www.uponor-qe.com/tool-giveaway](http://www.uponor-qe.com/tool-giveaway) for details.

Terms and conditions: Valid until 31st December 2013. One offer redeemable per person. Uponor reserves the right to take any action considered appropriate if there is a reason to believe that the offer is being abused. Uponor can cancel or withdraw the promotion at anytime.

### PEX Pipe white, supplied in 3m straight lengths



Diffusion-resistant PEX pipes, five-layer (PEX – adhesive agent – oxygen barrier – adhesive agent – PEX), for general plumbing and radiator connection applications. Manufactured to ISO 15875 for hot and cold water and heating applications with full WRAS approval.

Description	Code	Qty
16x1.8mm	<b>1058803</b>	75m
20x1.9mm	<b>1058804</b>	48m
25x2.3mm	<b>1058805</b>	30m

### PEX Pipe white, supplied in coils



Diffusion-resistant PEX pipes, five-layer (PEX – adhesive agent – oxygen barrier – adhesive agent – PEX), for general plumbing and radiator connection applications. Manufactured to ISO 15875 for hot and cold water and heating applications with full WRAS approval.

Description	uPoints	Code	Qty
16x1.8mm	200	<b>1059173</b>	50m
16x1.8mm	350	<b>1059182</b>	100m
16x1.8mm	700	<b>1059183</b>	200m
16x1.8mm	1750	<b>1058802</b>	500m
20x1.9mm	250	<b>1059174</b>	50m
25x2.3mm	300	<b>1059175</b>	50m

### PEX Pipe-in-Pipe



Uponor pipe-in-pipe system is designed to be integrated into the building structure and to be covered by screeds. Pipe can be withdrawn without damage to the building structure. Uponor pipe-in-pipe complies with the requirements of the Water Regulations 1999.

Description	uPoints	Code	Qty
16mm - Red	250	<b>1059179</b>	50m
16mm - Blue	250	<b>1059176</b>	50m
20mm - Red	300	<b>1059180</b>	50m
20mm - Blue	300	<b>1059177</b>	50m
25mm - Red	350	<b>1059181</b>	50m
25mm - Blue	350	<b>1059178</b>	50m

### PEX conduit



Made of high-density polyethylene. Supplied in coils. Details and prices of a wide range of other sizes of conduit are available on request. First number shown in description refers to O.D. of the protective tube. The second is the size of PEX pipe suitable. N.B. Does not include PEX Pipe.

Description	Code	Qty
25 Black (16mm)	<b>1012860</b>	50m
34 Black (20mm)	<b>1012864</b>	50m
42 Black (25mm)	<b>1012872</b>	25m

### Uponor Q&E PEX rings



Must be used on all Uponor Q&E PEX plumbing system joints.

Description	Code	Qty
16mm Red	<b>1058010</b>	20
16mm Blue	<b>1058013</b>	20
16mm White	<b>1057453</b>	20
20mm Red	<b>1058011</b>	20
20mm Blue	<b>1058014</b>	20
20mm White	<b>1057454</b>	20
25mm Red	<b>1058012</b>	20
25mm Blue	<b>1058015</b>	20
25mm White	<b>1057455</b>	20

### Coupling



Made from Engineered Plastic (PPSU). Uponor PEX plumbing system on both ends.

Description	Code	Qty
16mm	<b>1008669</b>	5
20mm	<b>1008932</b>	5
25mm	<b>1008671</b>	5

### Elbow 90°



Made from Engineered Plastic (PPSU). Uponor PEX plumbing system on both ends.

Description	Code	Qty
16mm	1008679	5
20mm	1008680	5
25mm	1008681	5

### Female centre tee



Made from Engineered Plastic (PPSU).

Description	Code	Qty
A B C		
16x½"x16mm	1042338	5
20x½"x20mm	1042339	5
25x½"x25mm	1042340	5
25x¾"x25mm	1042341	5

### Equal Tee



Made from Engineered Plastic (PPSU). Uponor PEX plumbing system on all ends.

Description	Code	Qty
16mm	1008684	5
20mm	1008685	5
25mm	1008686	5

### Male thread adaptor



Uponor PEX plumbing system on one end. With BSP male-threaded adaptor for screw connections.

Description	Code	Qty
16x½" MT	1008661	5
20x½" MT	1008662	5
20x¾" MT	1008663	5
25x¾" MT	1008664	5
25x1" MT	1008665	5

### Tee with reducer



Made from Engineered Plastic (PPSU). Uponor PEX plumbing system on all ends.

Description	Code	Qty
A B C		
16x20x16mm	1008710	5
20x16x16mm	1008700	5
20x16x20mm	1008689	5
20x20x16mm	1008697	5
20x25x20mm	1008711	5
25x16x16mm	1008702	5
25x16x20mm	1008699	5
25x16x25mm	1008690	5
25x20x16mm	1008701	5
25x20x20mm	1008703	5
25x20x25mm	1008691	5
25x25x20mm	1001420	5

### Female thread adaptor



Uponor PEX plumbing system on one end. With BSP female-threaded adaptor for screw connections.

Description	Code	Qty
16x½" FT	1042329	5
20x½" FT	1042330	5
20x¾" FT	1042331	5
25x¾" FT	1042332	5
25x1" FT	1042333	5

### Tap connector straight



Uponor PEX plumbing system on one end. With BSP female-threaded adaptor for screw connections. Washer included.

Description	Code	Qty
16x½" FT	1038021	1
20x½" FT	1038022	1
20x¾" FT	1038023	1
25x¾" FT	1038024	1
25x1" FT	1038025	1

### Tap connector elbow 90°



Uponor PEX plumbing system on one end. With BSP female-threaded adaptor for screw connections. Washer included.

Description	Code	Qty
16x½" FT	1038037	1
20x½" FT	1038038	1
20x¾" FT	1038039	1
25x¾" FT	1038040	1

### Wall plate elbow



Uponor PEX plumbing system on one end. With BSP female-threaded adaptor for screw connections.

Description	Code	Qty
16x½"	1042342	5
20x½"	1042343	5

### Manifold PEX (PPSU), BSP inlet



Supplied as a single manifold. Made from Engineered Plastic (PPSU). Use with Uponor Q&E PEX rings

Description	Code	Qty
¾"x16x16x16mm	1008714	1
¾"x20x16x16mm	1008716	1
¾"x16x16x16x16mm	1008715	1
¾"x20x16x16x16mm	1008717	1

### Reducer



Uponor PEX plumbing system on both ends.

Description	Code	Qty
20x16mm	1008674	5
25x16mm	1008675	5
25x20mm	1008676	5

### Manifold PEX (PPSU), Q&E inlet



Supplied as a single manifold. Made from Engineered Plastic (PPSU). Use with Uponor Q&E PEX rings

Description	Code	Qty
25/20x16x16mm	1008720	1
25/20x16x16x16mm	1008721	1
25/16x16x16mm	1008718	1
25/16x16x16x16mm	1008719	1

### Elbow 90° with female thread



Uponor PEX plumbing system on one end. With BSP female-threaded adaptor for screw connections.

Description	Code	Qty
16x½" FT	1042334	5
20x½" FT	1042335	5
20x¾" FT	1042336	5
25x¾" FT	1042337	5



### Manifold H PEX (PPSU), Q&E inlet



Supplied as a single manifold.  
Made from Engineered Plastic (PPSU). Use with Uponor Q&E PEX rings

Description	Code	Qty
20/20x16x16mm	1008722	1
20/20x16x16x16mm	1008723	1
25/20x16x16mm	1008724	1
25/20x16x16x16mm	1008725	1

### Modular straight connection



Made from Engineered Plastic (PPSU). For straight adaption from Modular manifold, BSP thread.

Description	Code	Qty
¾"	1048002	1

### Manifold PEX brackets



For use with Manifold PEX. Not suitable for use with modular manifolds.

Description	Code	Qty
¾"	1001338	2

### Modular elbow connection



Made from Engineered Plastic (PPSU). For 90 degree adaption from Modular manifold, BSP thread.

Description	Code	Qty
¾"	1048003	1

### Modular manifold c/c 50



Made from Engineered Plastic (PPSU), c/w BSP outlets

Description	Code	Qty
1xG½"	1047997	1
1xG¾"	1047998	1

### Modular end cap



Description	Code	Qty
1"	1048004	1

### Modular manifold Q&E c/c 50



Made from Engineered Plastic (PPSU), c/w with Uponor Q&E outlets

Description	Code	Qty
2x16	1047999	1
3x16	1048000	1
4x16	1048001	1

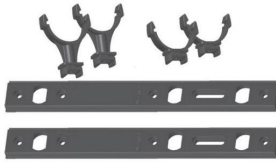
### Modular end cap c/w air nipple



Description	Code	Qty
1"	1048005	1



### Modular manifold wall bracket



Bag includes two wall brackets, two long - and two short clips.

Description	Code	Qty
1"	1048007	1

### Blanking plug



For sealing off Uponor 1/2" outlets during pressure testing

Description	Code	Qty
1/2" MT	1008281	25

### Copper adaptor



To adapt to Uponor Q&E PEX pipe from copper. Allow to cool before making Q&E joint.

Description	Code	Qty
16x15mm	1023040	5
20x22mm	1047941	5
25x22mm	1023042	5
25x28mm	1047942	5

### Compression adaptors (PEX Pipe)



Brass compression fitting to be used in conjunction with standard 15mm compression fitting bodies. Compatibility of threads must be checked.

Description	Code	Qty
16x1/2" FT	1058934	1
20x1/2" FT	1058935	1

### Manifold adaptors (PEX Pipe)



Made of plated brass.  
For use with Manifold L/P.

Description	Code	Qty
16x1/2" FT	1059510	1
20x1/2" FT	1059511	1

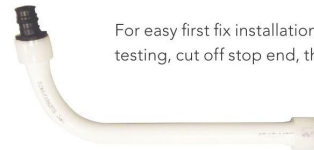
### Eurocone compression adaptors (PEX Pipe)



Made of brass, 3/4" FT Eurocone thread for connection to 3/4" MT outlets of NV/LS/TM Manifolds.

Description	Code	Qty
16x3/4" FT	1057368	1
20x3/4" FT	1057370	1

### Radiator Connection pipe c/w stop end



For easy first fix installation of radiators. After pressure testing, cut off stop end, then make connection.

Description	Code	Qty
16x200mm	1042320	1

### Radiator connection elbow



Uponor Q&E PEX plumbing system on one end. Chrome plated brass elbow with 15mm spigot for connection to radiators.

Description	Code	Qty
16x300mm	1023045	2

### Single bend guide plastic



Used to curve and protect Uponor PEX 16mm pipe-in-pipe up out of the floor leaving only the Uponor PEX 16mm pipe exposed through the floor. Protects the pipe below floor level. Price refers to single bend guide.

Description	Code	Qty
Single bend guide, PEX 16mm pipe-in-pipe	1009008	1

### Radiator connection pipe



15mm copper x 1/2" BSP MT to connect radiator to termination box.

Description	Code	Qty
1/2" MT x 250mm	1002033	1
1/2" MT x 350mm Chrome plated	1015425	20 <b>NEW</b>
1/2" MT x 1100mm Chrome plated	1015428	20 <b>NEW</b>

### Snap ring



Clip-on snap ring made of Polypropylene, available in white only.

Description	Code	Qty
15/16mm	1011370	50

### Radiator connection guide (solid floor)



Robust bend support and white powder coated aluminium upstand to protect pipe between floor and radiator. Price refers to a pack of two guides.

Description	Code	Qty
12/16mm	1002237	1

### Pipe clips



Pipe clips made of white plastic.

Description	Code	Qty
12mm	1013141	100
15/16mm	1013142	100
20mm	1013144	50
22/25mm	1013145	50
28/32mm	1013146	50
40mm	1013147	25

### Radiator connection guide (joisted floor)



Robust white powder coated aluminium upstand to protect pipe between floor and radiator. Price refers to a pack of two guides.

Description	Code	Qty
12/16mm	1002238	1

### Termination Box **NEW**



To be used with 16x 1/2" FT 90° elbow (item 1042334) and radiator connection pipe.

Description	Code	Qty
16x 1/2" FT	1048622	10

### Chromed Upstand Pipe Pack (750mm)



Chrome upstand to protect pipe between floor and radiator. For use with both pipe-in-pipe and pipe without conduit. Pack of two upstands.

Description	Code	Qty
12/16mm	1002239	1

### Chromed Upstand Pipe Pack (250mm)



Chrome upstand to protect pipe between floor and radiator. For use with both pipe-in-pipe and pipe without conduit. Pack of two upstands.

Description	Code	Qty
12/16mm	1002240	1

### Single plugged hook



For the fast attachment of pipes with outer diameter of up to 32mm. Suitable for use on concrete floor.

Description	Code	Qty
60mm	1013137	50
80mm	1013138	50

### PEX Pipe bend supports



These should be used for all pipe and pipe-in-pipe bends. Use the correct bend support to match the outer diameter of the pipe or of the conduit.

Description	Code	Qty
<b>Metal</b>		
15mm/16mm	1009004	1
20mm	1009233	1
25mm	1009006	1
28-34mm	1001231	1

### Twin plugged hook



For the fast attachment of pipes with outer diameter of up to 32mm. Suitable for use on concrete floor.

Description	Code	Qty
60mm	1013139	50
80mm	1013140	50

### Conduit pipe clip



For nailing conduit in position.

Description	Code	Qty
25mm	1009014	50
34mm	1009015	20

### Spanner



For use with 1/2" compression adaptors when connecting to manifolds.

Description	Code	Qty
25mm open spanner	1034109	1

### Uponor PEX insert spares



For use with Uponor PEX plumbing in old sizes 15x1.5, 22x2.0, 28x2.6mm. Allows modification and repairs in conjunction with standard compression fitting.

Description	Code	Qty
15mm	1002034	1
22mm	1002035	1
28mm	1002036	1

# Codes Of Practice

The following Standards apply in the design and installation of plastic pipes for heating and hot/cold water applications

## **BS EN 12828:2003**

Heating systems in buildings. Design for water-based heating systems.

## **BS EN 12831:2003**

Heating systems in buildings. Method of calculation of the design heat load.

## **BS 6700:2006**

Specification for design, installation, testing and maintenance of services supplying water for domestic use within buildings and their curtilages - specification.

**Note:** BS 6700 is to be withdrawn and replaced by a new British Standard BS EN 806 parts 1-5, which is currently under development, as is BS 8558, which will be a supplement and guide to BS EN 806

## **BS 5449:1990**

(Withdrawn & replaced by BS EN 12828, but included for reference)

Specification for forced circulation hot water central heating systems for domestic premises.

## **BS 5955-8:2001**

Plastics pipework (thermoplastics materials).

Specification for the installation of thermoplastics pipes and associated fittings for use in domestic hot and cold services and heating systems in buildings.

## **BS 8000-15:1990**

Workmanship on building sites. Code of practice for hot and cold water services (domestic scale).

## **PAS 33:1999**

Specification for the design, installation and commissioning of gas fired central heating systems in domestic premises.

## **Water Industry Act 1991**

Water Supply (Water Fittings) Regulations 1999.

## **The Building Regulations 2010**

(Including approved documents G and L).



# Q&E Shrink-Fit™

**Fast & Simple to Install**  
**More Watertight & Durable**  
**Superior Water Flow**  
**Universal & Comprehensive**

Visit **[www.uponor-qe.com](http://www.uponor-qe.com)**  
and experience this exciting  
new plumbing system.

### **Uponor Limited**

Head Office,  
Gilmorton Road,  
Lutterworth,  
Leicestershire, LE17 4DU

T. 01455 550355  
E. [enquiries.uk@uponor.com](mailto:enquiries.uk@uponor.com)  
W. [www.uponor.co.uk](http://www.uponor.co.uk)